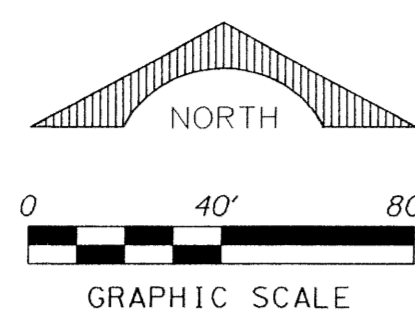


PERIMETER

SURVEYING & MAPPING
 Certificate of Authorization No. LB7264
 Prepared by: Jeff S. Hodapp, P.S.M.
 951 Broken Sound Parkway, Suite 108
 Boca Raton, Florida 33487
 Tel: (561) 241-9988
 Fax: (561) 241-5182

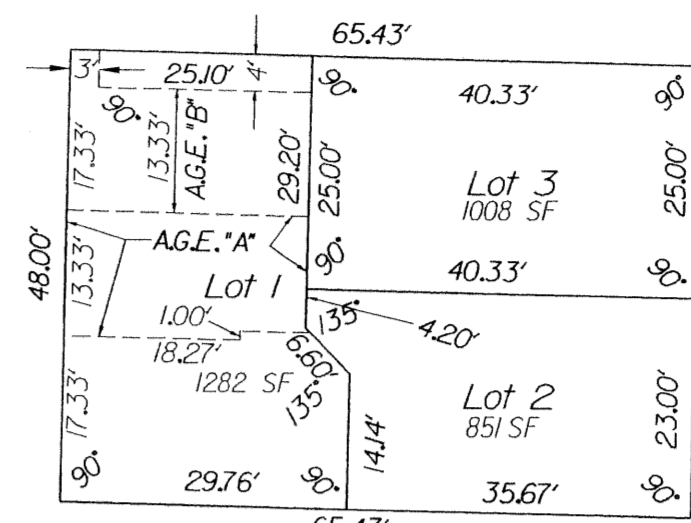


THOUSAND OAKS

A PORTION OF THE NORTHEAST ONE-QUARTER OF
 SECTION 30, TOWNSHIP 42 SOUTH, RANGE 43, EAST,
 CITY OF RIVIERA BEACH, PALM BEACH COUNTY, FLORIDA.

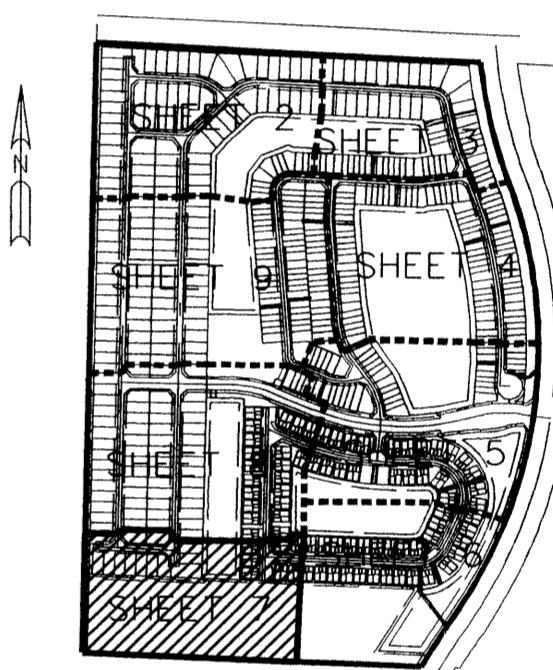
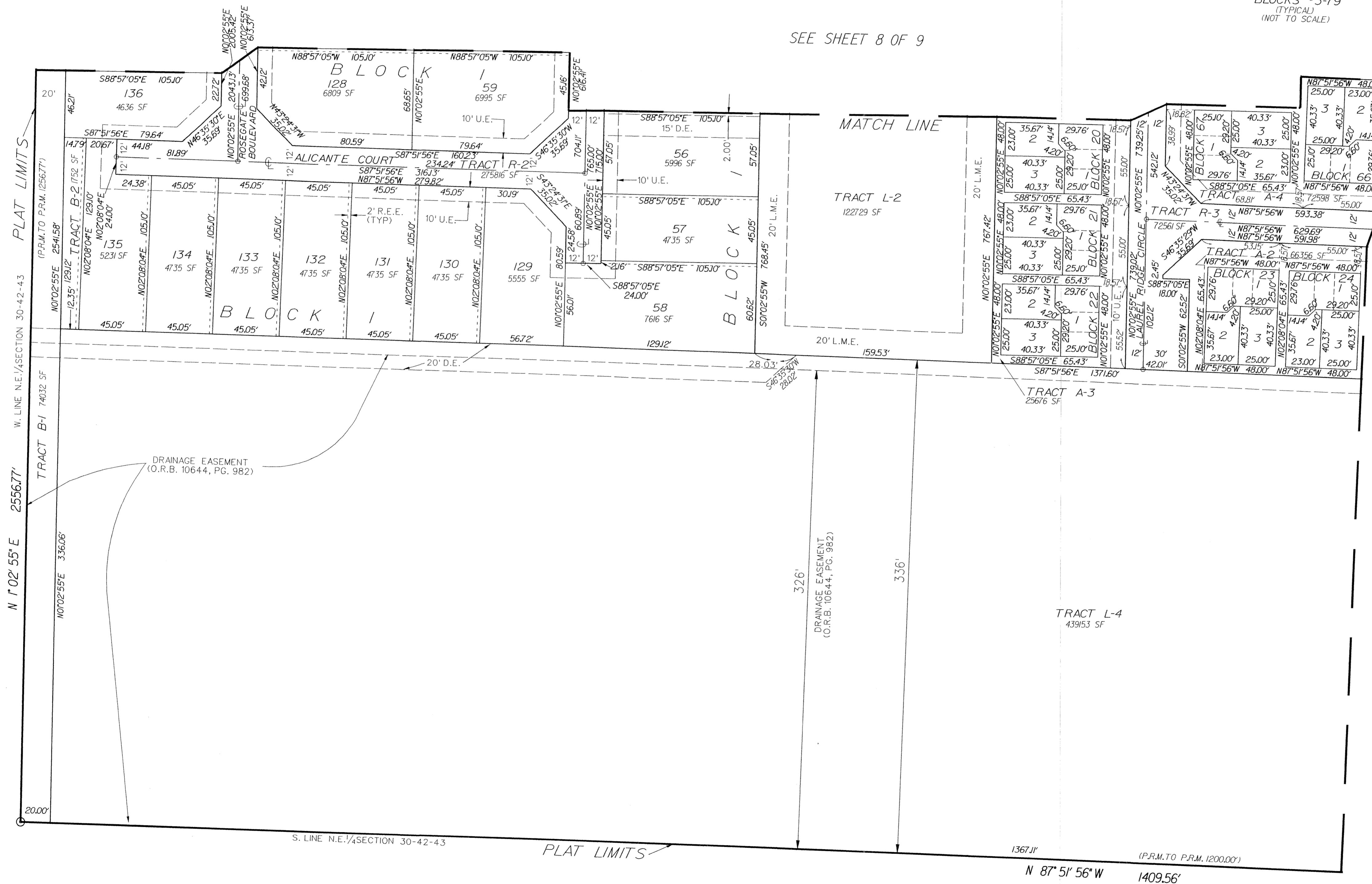
141

SHEET 7 OF 9



SEE SHEET 8 OF 9

SOUTH FLORIDA WATER MANAGEMENT DISTRICT C-17 CANAL
 (320' R/W, PER R/W MAP C-17-13, 9/11/79)



KEY MAP
 NOT TO SCALE

SEE SHEET 6 OF 9

- LEGEND:
- ⊙ SET P.R.M. (UNLESS OTHERWISE NOTED) 4" DIAMETER BRASS DISK IN CONC. MON. STAMPED *LB7264 P.C.P.
- ABBREVIATIONS:
- A.G.E. ACCESS AND GARAGE EASEMENT
 - CH CHORD
 - CHB CHORD BEARING
 - CONC. CONCRETE
 - COR. CORNER
 - D DELTA (CENTRAL ANGLE)
 - D.E. DRAINAGE EASEMENT
 - I.R. IRON ROD
 - I.R.C. IRON ROD AND CAP
 - L ARCLength
 - L.B. LICENSED BUSINESS
 - L.S. LICENSED SURVEYOR
 - L.M.E. LAKE MAINTENANCE EASEMENT
 - L.M.A.E. LAKE MAINTENANCE ACCESS EASEMENT
 - L.W.D.D. LAKE WORTH DRAINAGE DISTRICT
 - MON. MONUMENT
 - O.R.B. OFFICIAL RECORDS BOOK
 - N.R. NON-RADIAL
 - P.B. PLAT BOOK
 - P.B.C.R. PALM BEACH COUNTY RECORDS
 - PG. PAGE
 - P.C.P. PERMANENT CONTROL POINT
 - P.O.B. POINT OF BEGINNING
 - P.O.C. POINT OF COMMENCEMENT
 - P.R.M. PERMANENT REFERENCE MONUMENT
 - P.S.M. PROFESSIONAL SURVEYOR & MAPPER
 - P.U.D. PLANNED UNIT DEVELOPMENT
 - R RADIUS
 - R.E.E. ROOF ENCROACHMENT EASEMENT
 - R/W RIGHT-OF-WAY
 - SEC. SECTION
 - SF SQUARE FEET
 - S.F.W.M.D. SOUTH FLORIDA WATER MANAGEMENT DISTRICT
 - U.E. UTILITY EASEMENT

"TIMBER PINE NORTH PLAT NO. 2"
 (P.B. 59, PGS. 36-37)